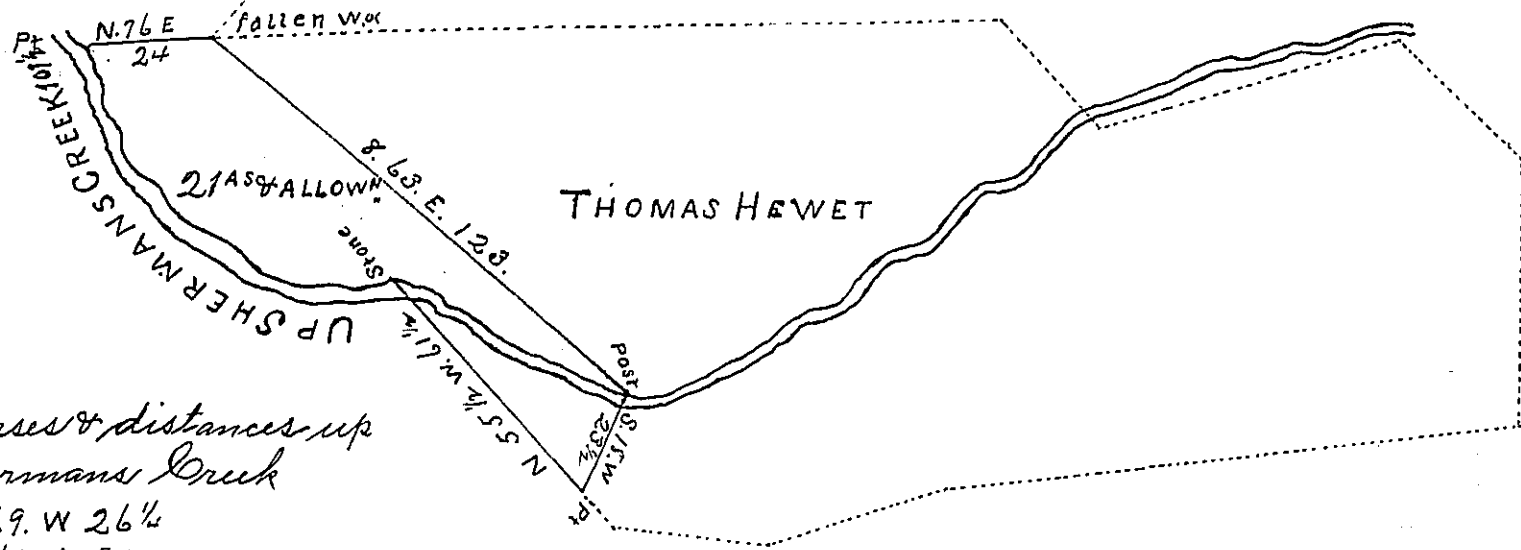


JNO KINCAID



*Courses & distances up
Shermans Creek*

S. 69. W 26 1/4
N. 61. W 54
N. 9. W. 21

101 1/4

*A Draught of a Tract of Land Situate in Tyboine
Township Cumberland County Containing 21^{as} &
allowance of six ¹/₂ Cent for Roads &c It being
part of a Larger tract of 142^{as} 136 ¹/₂ & allowance,
Surveyed on an Application granted to Thomas
Hewet dated the 16th Day of August 1766 No. 866.
Surveyed & Divided off the above, 16th day of
September 1812.*

Wm Wheeler D.S.

*To Andrew Porter Esqr
S. J.*

IN TESTIMONY that the above is a copy of the original remaining on file in
the Department of Internal Affairs of Pennsylvania, made
conformably to an Act of Assembly approved the 16th day of
February, 1833, I have hereunto set my Hand and caused
the Seal of said Department to be affixed at Harrisburg,
this *fourth* day of *August* 1903

Francis P. Brown
Secretary of Internal Affairs.